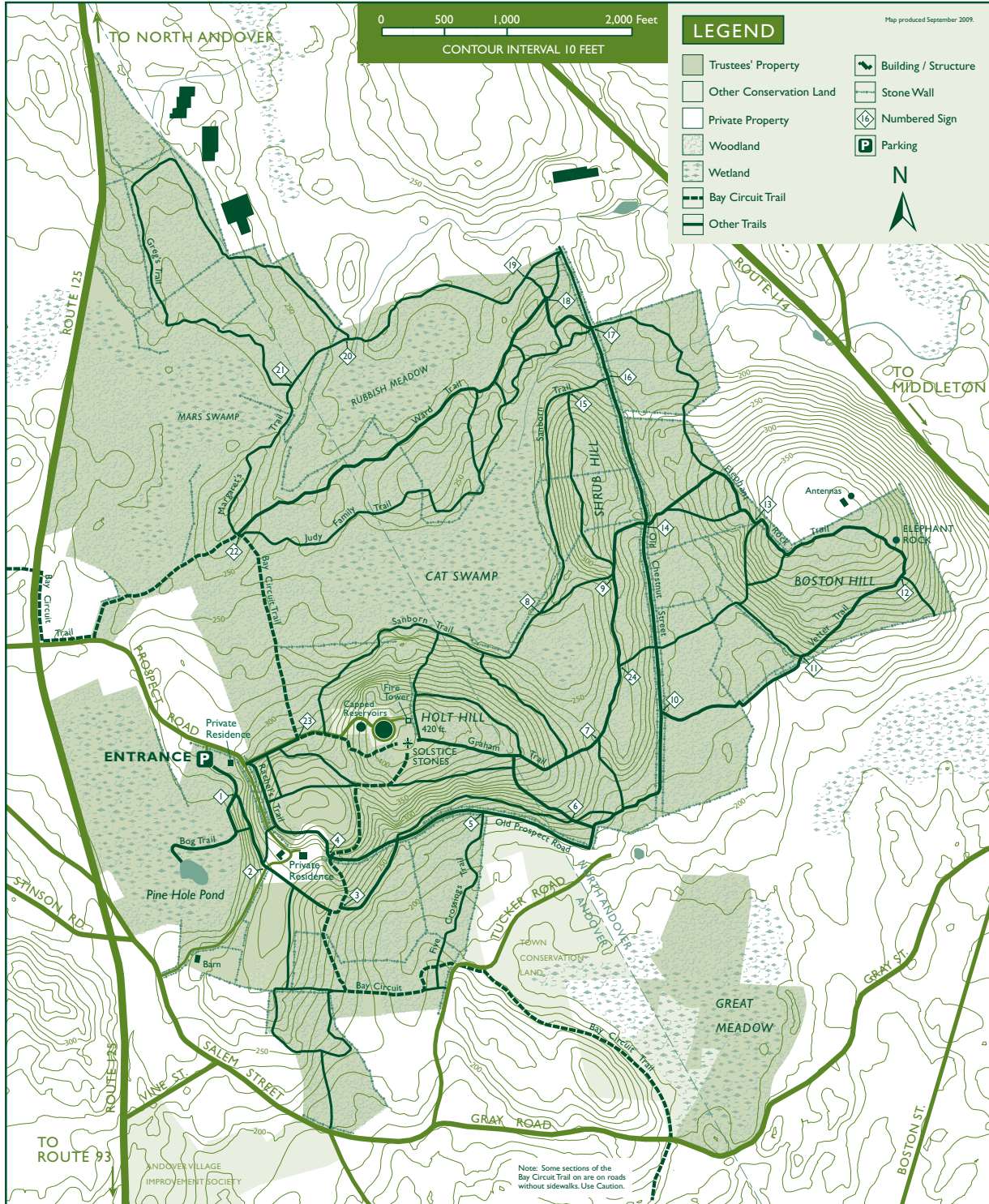




# CHARLES W. WARD RESERVATION (700 ACRES)

Prospect Road ▪ Andover & North Andover, Massachusetts  
 978.356.4351 ▪ neregion@ttor.org ▪ www.thetrustees.org  
 PROPERTY OF THE TRUSTEES OF RESERVATIONS



BIRD WATCHING



HORSEBACK RIDING



MAP GUIDE



WALKING / HIKING (EASY)



WALKING / HIKING (MODERATE)



WALKING / HIKING (STRENUOUS)



PICNICKING



HUNTING



REGIONAL TRAIL LINK



CROSS-COUNTRY SKIING / SNOWSHOEING

This map is a product of the Geographic Information System of The Trustees of Reservations. Source data obtained from 1:25,000 scale USGS topographic maps, field surveys, Global Positioning System (GPS), and the Massachusetts Executive Office of Environmental Affairs, MassGIS. Boundary lines and trail locations are approximate. September 2010.